

ALASKA RETIREMENT MANAGEMENT BOARD

FINANCIAL REPORT

AS of July 31, 2006

ALASKA RETIREMENT MANAGEMENT BOARD
Schedule of Investment Income and Changes in Invested Assets by Fund
July 1, 2005 through July 31, 2006
1 of 12 Months

Fund Type	Beginning Invested Assets	Investment Income ⁽¹⁾	Net Contributions (Withdrawals) ⁽²⁾	Ending Invested Assets
<u>PERS System</u>				
Defined Benefit Plan-Public Employees Retirement Trust Fund	\$ 9,372,663,353	\$ 18,071,138	\$ (2,504,410)	\$ 9,388,230,081
Defined Contribution Retirement Plan-Defined Benefit- Occupational Death and Disability PERS	-	-	179	179
Defined Contribution Retirement Plan-Participant Directed- Defined Contribution Retirement PERS	-	6	7,501	7,507
	<u>9,372,663,353</u>	<u>18,071,145</u>	<u>(2,496,731)</u>	<u>9,388,237,767</u>
<u>TRS System</u>				
Defined Benefit Plan-Teachers Retirement Trust Fund	4,293,549,841	8,371,852	(21,189,415)	4,280,732,278
Defined Contribution Retirement Plan-Defined Benefit- Occupational Death and Disability TRS	-	-	-	-
Defined Contribution Retirement Plan-Participant Directed- Defined Contribution Retirement TRS	-	1	1,149	1,150
	<u>4,293,549,841</u>	<u>8,371,853</u>	<u>(21,188,266)</u>	<u>4,280,733,428</u>
<u>Judicial Retirement Plan</u>				
Defined Benefit Plan-Judicial Retirement Trust Fund	<u>79,275,678</u>	<u>129,545</u>	<u>(319,091)</u>	<u>79,086,132</u>
<u>Military Retirement Plan</u>				
Defined Benefit Plan-Military Retirement Trust Fund	<u>15,673,263</u>	<u>108,409</u>	<u>1,640,649</u>	<u>17,422,322</u>
<u>SBS Plan</u>				
Supplemental Annuity Plan	<u>2,022,377,082</u>	<u>12,486,236</u>	<u>(8,808,957)</u>	<u>2,026,054,361</u>
<u>Deferred Compensation Plan</u>				
Deferred Compensation Plan	<u>483,955,337</u>	<u>144,658</u>	<u>(860,387)</u>	<u>483,239,608</u>
<u>Defined Contribution Retirement-Retiree Medical Plan</u>				
Defined Contribution Retirement-Retiree Medical Plan	<u>-</u>	<u>1</u>	<u>1,177</u>	<u>1,178</u>
<u>Defined Contribution Retirement-Health Reimbursement Arrangement</u>				
Defined Contribution Retirement-Health Reimbursement Arrangement	<u>-</u>	<u>3</u>	<u>3,929</u>	<u>3,933</u>
Total All Funds	<u>16,267,494,554</u>	<u>39,311,850</u>	<u>(32,027,676)</u>	<u>16,274,778,728</u>

Notes:

(1) Includes interest, dividends, securities lending, expenses, realized and unrealized gains/losses

(2) Includes plan contributions, benefits, refunds, administrative expenses, transfers in from retiree health fund and other additions

ALASKA RETIREMENT MANAGEMENT BOARD
Schedule of Investment Income and Changes in Invested Assets by Fund
For the Month Ended July 31, 2006

Fund Type	Beginning Invested Assets	Investment Income ⁽¹⁾	Net Contributions (Withdrawals) ⁽²⁾	Ending Invested Assets	% Increase (Decrease) in Invested Assets
<u>PERS System</u>					
Defined Benefit Plan-Public Employees Retirement Trust Fund	\$ 9,372,663,353	\$ 18,071,138	\$ (2,504,410)	\$ 9,388,230,081	0.17%
Defined Contribution Retirement Plan-Defined Benefit- Occupational Death and Disability PERS	-	0	179	179	
Defined Contribution Retirement Plan-Participant Directed- Defined Contribution Retirement PERS	-	6	7,501	7,507	
	<u>9,372,663,353</u>	<u>18,071,139</u>	<u>(2,496,731)</u>	<u>9,388,237,767</u>	
<u>TRS System</u>					
Defined Benefit Plan-Teachers Retirement Trust Fund	4,293,549,841	8,371,852	(21,189,415)	4,280,732,278	-0.30%
Defined Contribution Retirement Plan-Defined Benefit- Occupational Death and Disability TRS	-	-	-	-	
Defined Contribution Retirement Plan-Participant Directed- Defined Contribution Retirement TRS	-	1	1,149	1,150	
	<u>4,293,549,841</u>	<u>8,371,853</u>	<u>(21,188,266)</u>	<u>4,280,733,428</u>	
<u>Judicial Retirement Plan</u>					
Defined Benefit Plan-Judicial Retirement Trust Fund	<u>79,275,678</u>	<u>129,545</u>	<u>(319,091)</u>	<u>79,086,132</u>	-0.24%
<u>Military Retirement Plan</u>					
Defined Benefit Plan-Military Retirement Trust Fund	<u>15,673,263</u>	<u>108,409</u>	<u>1,640,649</u>	<u>17,422,322</u>	11.16%
<u>SBS Plan</u>					
Supplemental Annuity Plan	<u>2,022,377,082</u>	<u>12,486,236</u>	<u>(8,808,957)</u>	<u>2,026,054,361</u>	0.18%
<u>Deferred Compensation Plan</u>					
Deferred Compensation Plan	<u>483,955,337</u>	<u>144,658</u>	<u>(860,387)</u>	<u>483,239,608</u>	-0.15%
<u>Defined Contribution Retirement-Retiree Medical Plan</u>					
Defined Contribution Retirement-Retiree Medical Plan	<u>-</u>	<u>1</u>	<u>1,177</u>	<u>1,178</u>	
<u>Defined Contribution Retirement-Health Reimbursement Arrangement</u>					
Defined Contribution Retirement-Health Reimbursement Arrangement	<u>-</u>	<u>3</u>	<u>3,929</u>	<u>3,933</u>	
Total All Funds	<u>16,267,494,554</u>	<u>39,311,844</u>	<u>(32,027,676)</u>	<u>16,274,778,728</u>	

Notes:

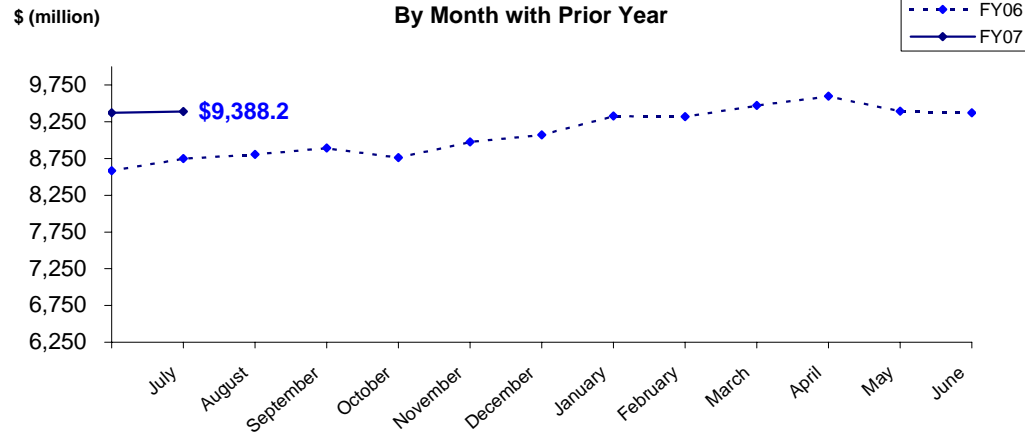
(1) Includes interest, dividends, securities lending, expenses, realized and unrealized gains/losses

(2) Includes plan contributions, benefits, refunds, administrative expenses, transfers in from retiree health fund and other additions

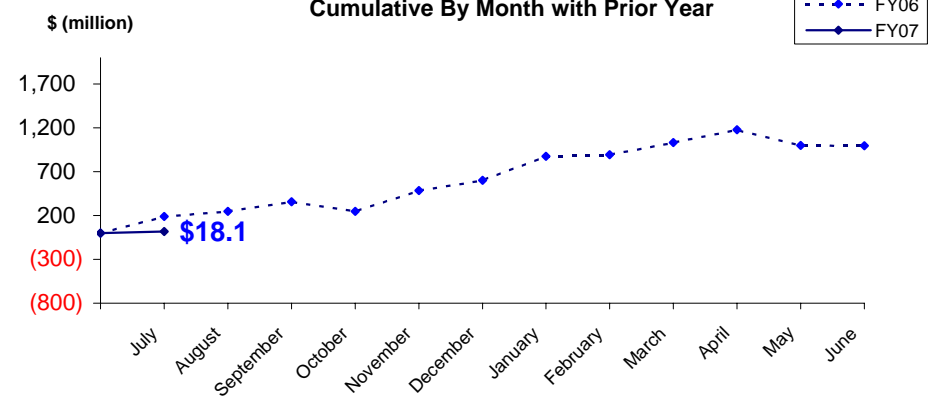
PUBLIC EMPLOYEES' RETIREMENT TRUST FUND

AS OF July 31, 2006

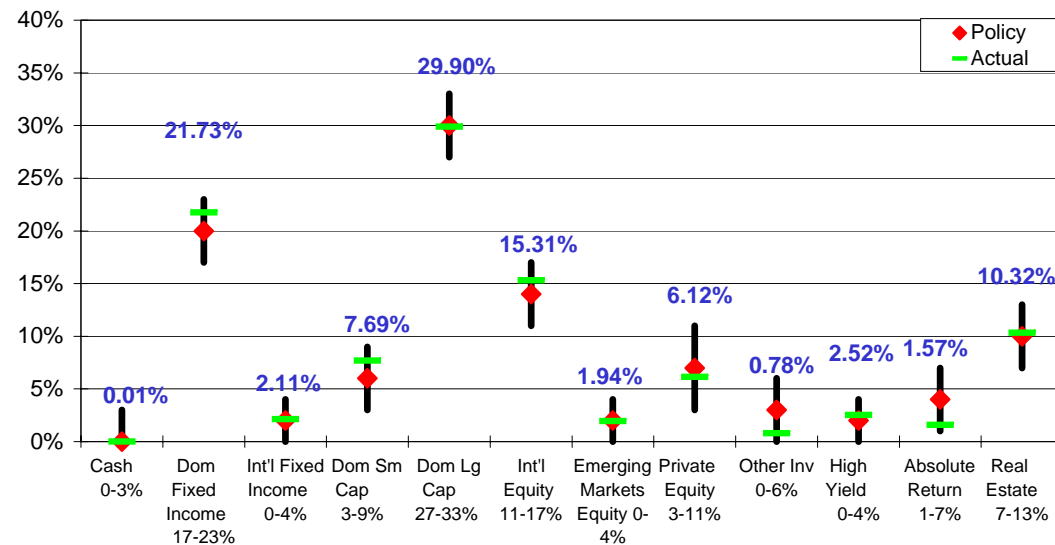
Total Invested Assets
By Month with Prior Year



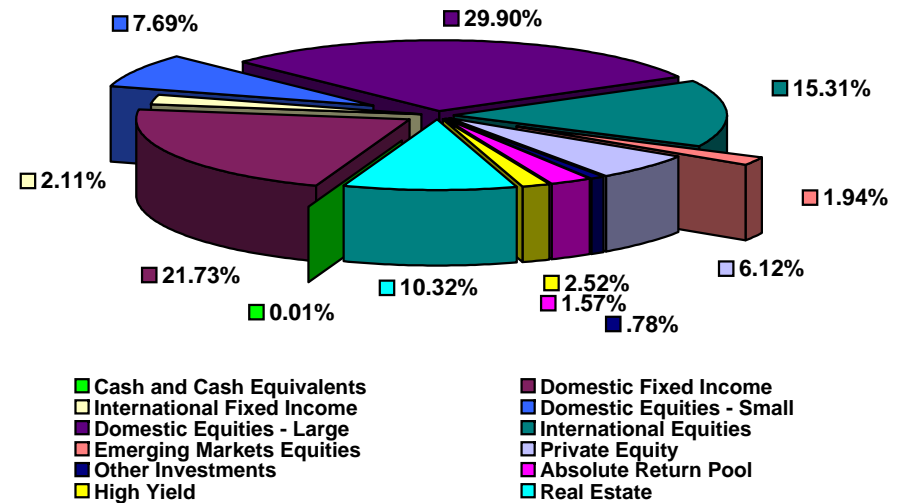
Investment Income
Cumulative By Month with Prior Year



Actual Asset Allocation v. Target Allocation

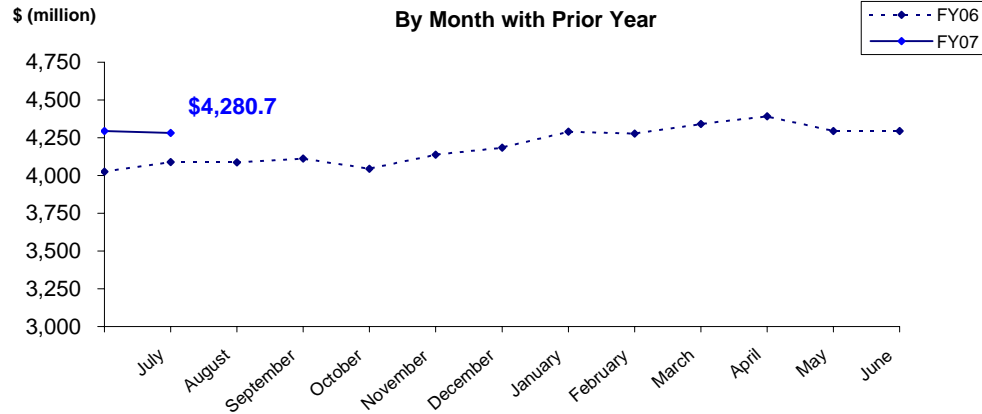


Invested Assets
By Major Asset Class

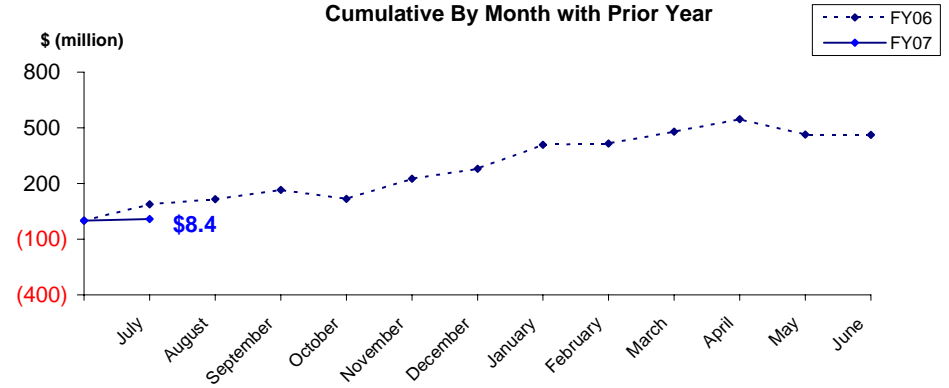


TEACHERS' RETIREMENT TRUST FUND AS OF July 31, 2006

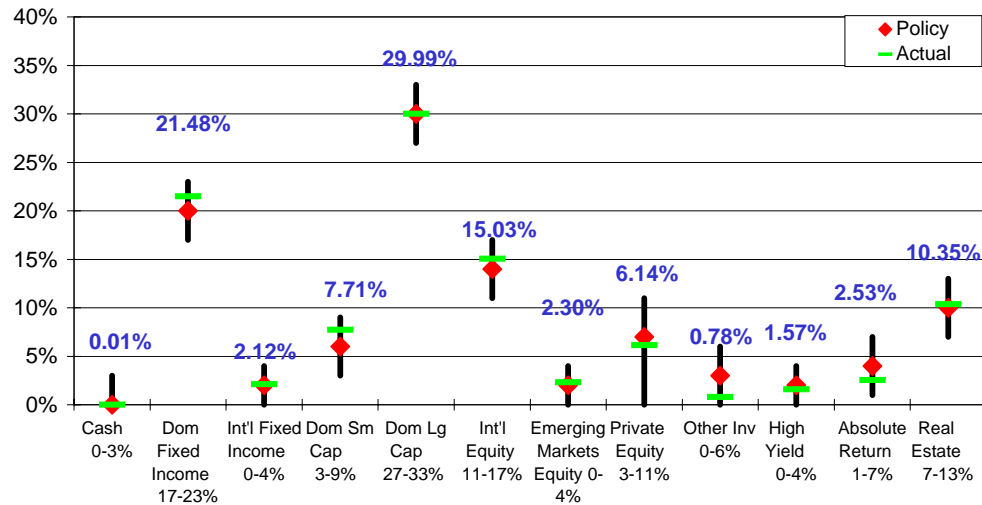
Total Invested Assets By Month with Prior Year



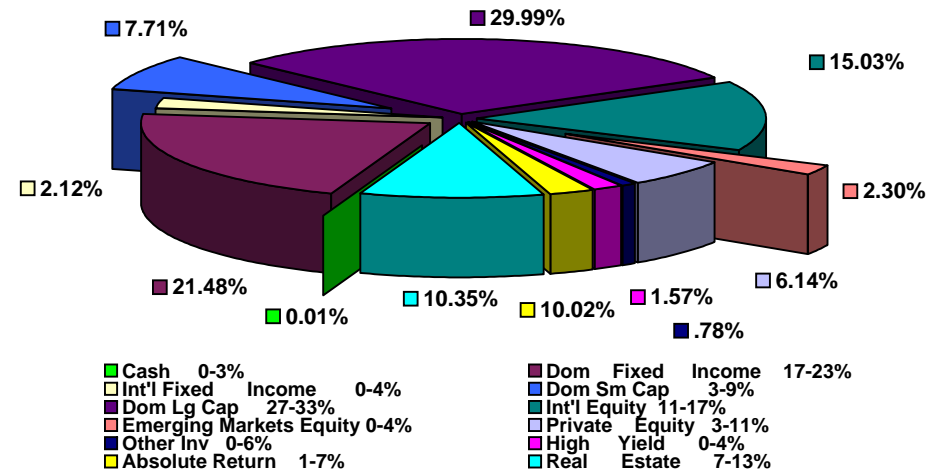
Investment Income Cumulative By Month with Prior Year



Actual Asset Allocation v. Target Allocation

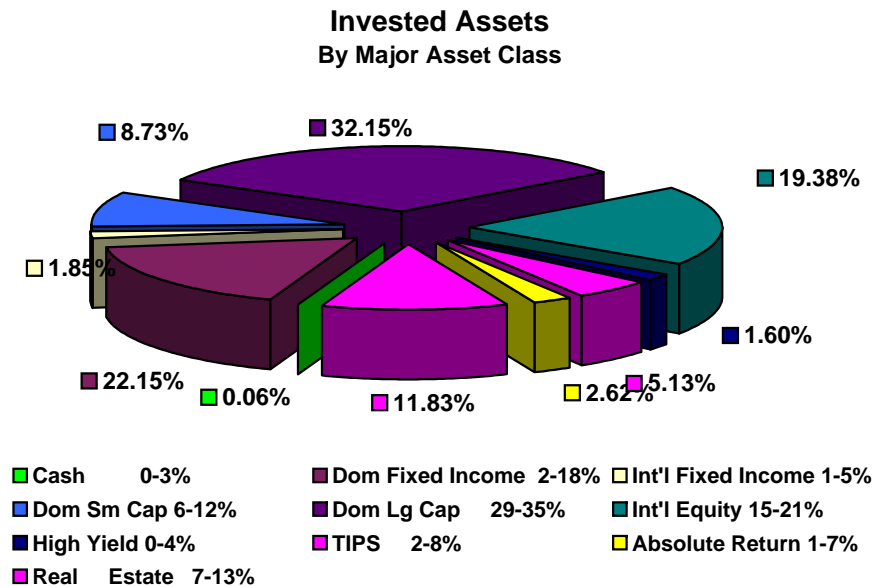
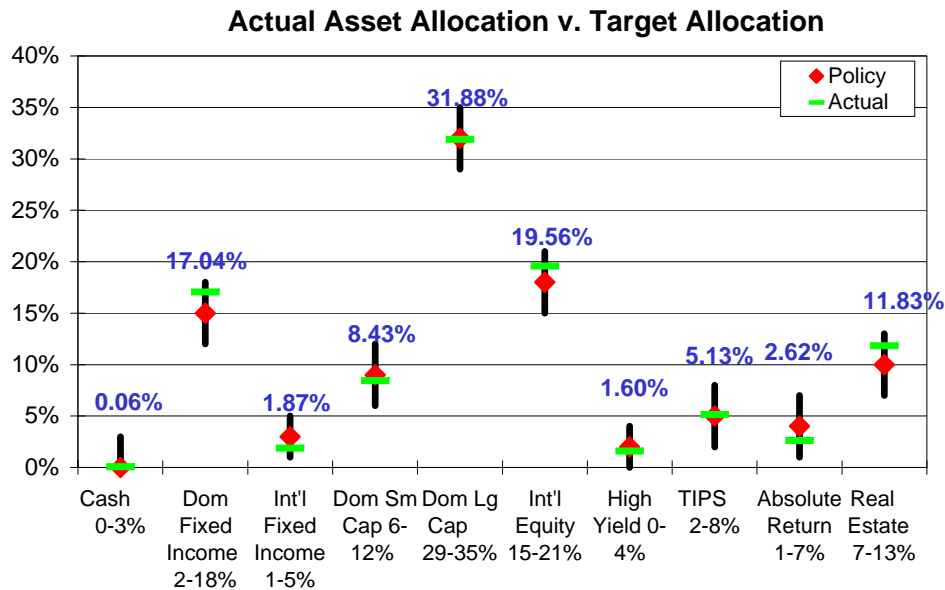
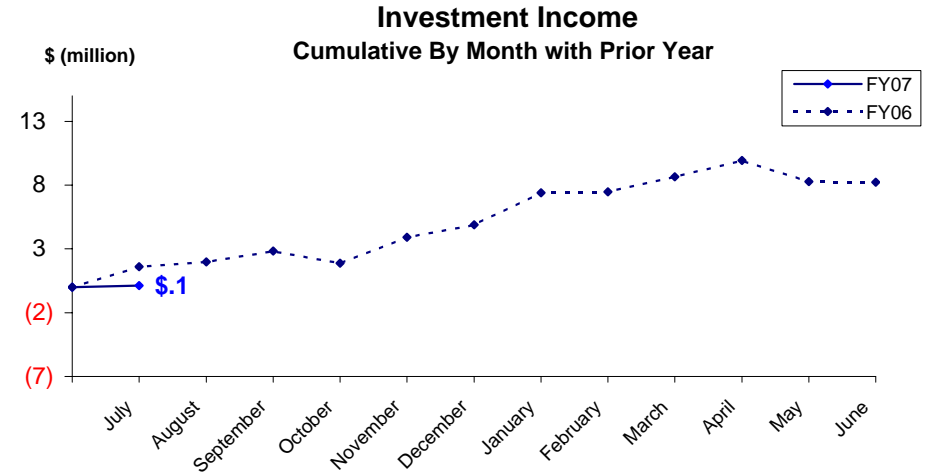
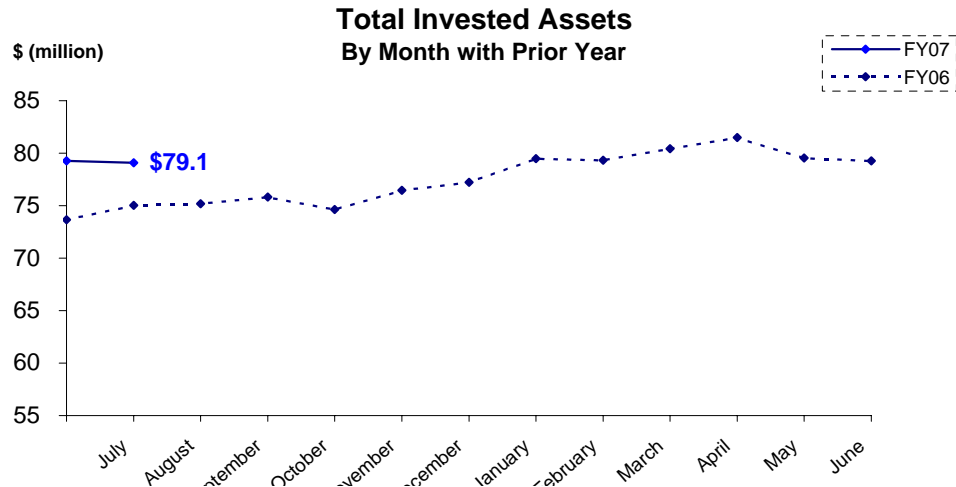


Invested Assets By Major Asset Class



JUDICIAL RETIREMENT TRUST FUND

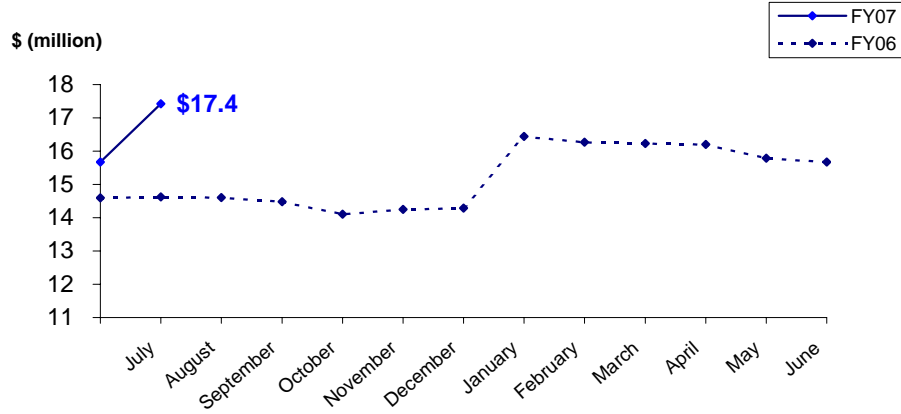
AS OF July 31, 2006



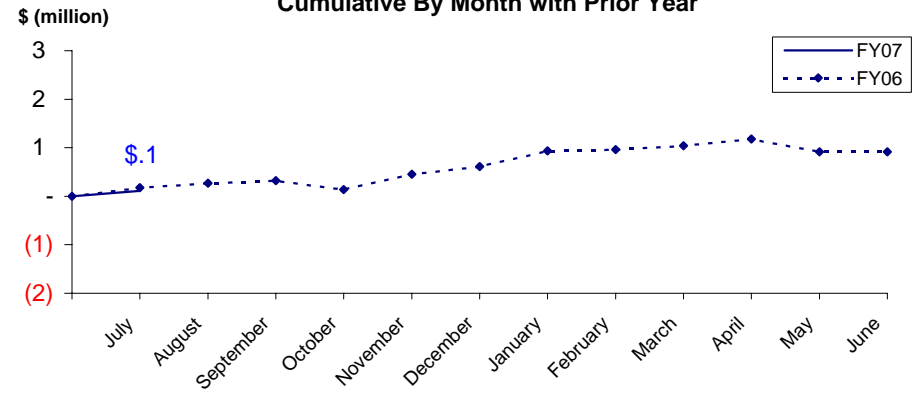
MILITARY RETIREMENT TRUST FUND

AS OF July 31, 2006

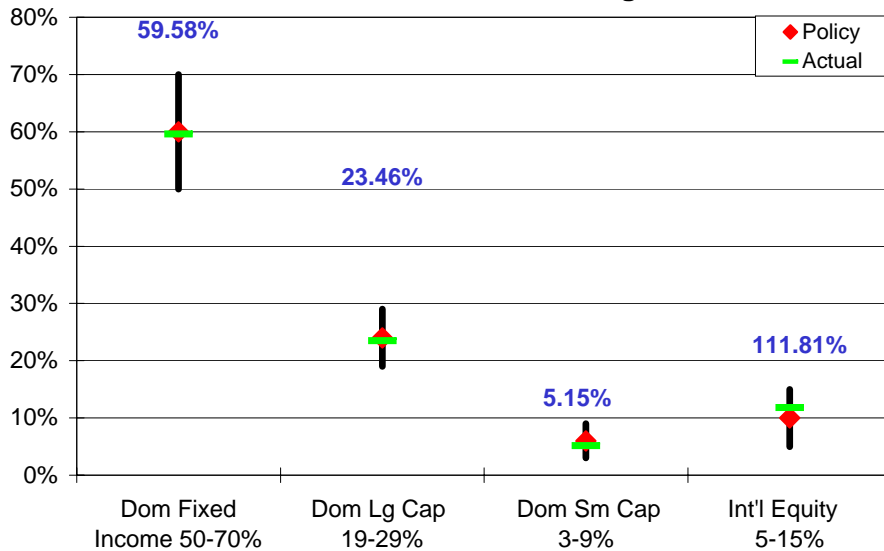
Total Invested Assets
By Month with Prior Year



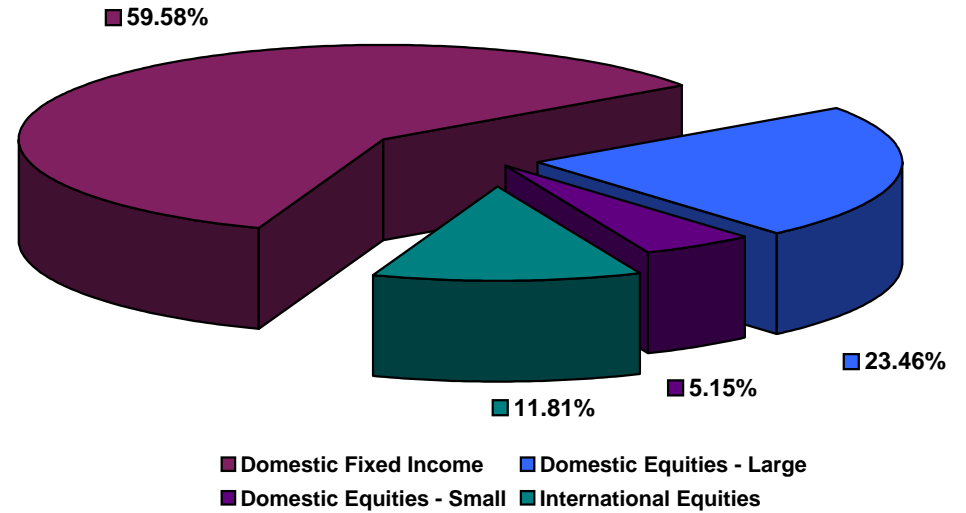
Investment Income
Cumulative By Month with Prior Year



Actual Asset Allocation v. Target Allocation



Invested Assets
By Major Asset Class



ALASKA RETIREMENT MANAGEMENT BOARD
Reporting of Funds by Manager

Defined Benefit Plans
For the Month Ended July 31, 2006

ALASKA RETIREMENT MANAGEMENT BOARD
PERS, TRS, JUD, and MIL Retirement Funds by Manager
Schedule of Investment Income and Changes in Invested Assets
For the Month Ended July 31, 2006

		Beginning Invested Assets	Total Investment Income	Net Contributions (Withdrawals) & Transfers In (Out)	Ending Invested Assets	% of Total	% of Pool Total
<u>AY</u>							
70	Short-Term Fixed Income Pool	\$ 1,152,314	75,918	\$ (91,175)	\$ 1,137,058	0.01%	0.01%
77	Internal Fixed Income Investment Pool	2,153,660,154	39,672,541	790,125,286	2,983,457,980	21.67%	21.67%
	External Domestic Fixed Income Pool						
74	<u>Blackrock</u>	831,650,125	(308,368)	(831,341,758)	-	0.00%	0.00%
	Treasury Inflation Protected Securities						
6M	SSgA TIPS	-	53,903	4,000,000	4,053,903	0.03%	0.03%
	International Fixed Income Pool						
63	Mondrian Investment Partners	287,503,692	2,855,278	-	290,358,970	2.11%	2.11%
	High Yield Pool						
9N	ING Investment Management	107,654,033	813,746	-	108,467,779	0.79%	
9P	MacKay Shields, LLC	106,791,853	247,216	-	107,039,069	0.78%	
		214,445,886	1,060,962	-	215,506,848		1.57%
	Domestic Equity Pool						
	Small Cap Managers						
	Indexed						
9L	SSgA Russell 2000	12,610,208	(405,611)	-	12,204,597	0.09%	
	Actively Managed					0.00%	
4B	TCW Asset Management Company	297,059,689	(9,864,586)	-	287,195,102	2.09%	
4D	Turner Investment Partners	293,539,240	(16,604,160)	-	276,935,080	2.01%	
4F	Luther King Capital Management	130,761,376	(2,880,362)	-	127,881,014	0.93%	
4G	Jennison Associates, LLC	187,441,228	(5,087,560)	-	182,353,668	1.32%	
6A	SSgA Futures Small Cap	-	(814,299)	3,500,000	2,685,701	0.02%	
4H	Lord Abbett & Co.	178,898,387	(8,977,118)	-	169,921,269	1.23%	
	Total Active	1,087,699,920	(44,228,085)	3,500,000	1,046,971,834		
	Total Small Cap	1,100,310,127	(44,633,696)	3,500,000	1,059,176,431		7.69%
	Large Cap Managers						
	Indexed						
37	SSgA S&P 500 Index Fund	1,990,643,328	11,927,330	-	2,002,570,658	14.55%	
	Total Indexed	1,990,643,328	11,927,330	-	2,002,570,658		14.55%
	Actively Managed						
39	Cap Guardian Trust Co	387,252,695	(4,083,903)	-	383,168,793	2.78%	
47	Lazard Freres	385,495,019	1,405,711	-	386,900,731	2.81%	
48	McKinley Capital Mgmt.	340,144,889	(10,481,236)	-	329,663,653	2.39%	
38	RCM	460,688,066	(5,582,944)	(65,000,000)	390,105,122	2.83%	
4a	Tukman, Value	295,283,339	3,199,577	-	298,482,916	2.17%	
6B	SSgA Futures large cap	-	1,024,791	2,500,000	3,524,791	0.03%	
4J	Relational Investors, LLC	294,418,594	6,781,887	24,283,651	325,484,132	2.36%	
	Total Active	2,163,282,603	(7,736,116)	(38,216,349)	2,117,330,138		15.38%
	Total Domestic Equity Pool	5,254,236,059	(40,442,483)	(34,716,349)	5,179,077,227		37.62%

(Cont.)

ALASKA RETIREMENT MANAGEMENT BOARD
PERS, TRS, JUD, and MIL Retirement Funds by Manager
Schedule of Investment Income and Changes in Invested Assets
For the Month Ended July 31, 2006

		Beginning Invested Assets	Total Investment Income	Net Contributions (Withdrawals) & Transfers In (Out)	Ending Invested Assets	% of Total	% of Pool Total
International Equity Pool							
64	Bank of Ireland Asset Mgmt.	-	-	-	-	0.00%	
65	Brandes Investment Partners	521,336,774	2,170,586	-	523,507,361	3.80%	
58	Lazard Freres	476,480,826	2,626,434	-	479,107,260	3.48%	
67	Cap Guardian Trust Co	486,688,862	2,418,432	-	489,107,294	3.55%	
68	State Street Global Advisors	292,631,196	3,553,675	-	296,184,871	2.15%	
6D	SSgA Futures International	-	800,207	3,000,000	3,800,207	0.03%	
69	McKinley Capital Management	305,699,166	1,173,637	-	306,872,803	2.23%	
	Total International Equities	2,082,836,824	12,742,972	3,000,000	2,098,579,797		15.25%
Emerging Markets Equity Pool (1)							
61	JP Morgan Investment Mgmt.	128,385,601	1,311,172	-	129,696,773	0.94%	
62	The Capital Group Inc.	149,044,032	1,979,675	-	151,023,706	1.10%	
	Total Emerging Market	277,429,633	3,290,847	-	280,720,480		2.04%
Private Equity Pool							
98	Pathway Capital Management LLC	235,098,210	397,246	9,183,345	244,678,801	1.78%	
85	Abbott Capital	506,533,163	2,033,270	1,506,933	510,073,366	3.71%	
8A	Blum Capital Partners-Strategic	33,633,550	(2)	2,467,105	36,100,654	0.26%	
8B	Blum Capital Partners-Public	48,586,095	(1,713,465)	-	46,872,630	0.34%	
	Total Private Equity	823,851,019	717,049	13,157,383	837,725,450		6.09%
Other Investment Pool							
9A	TCW Energy Fund XD	40,218,163	1,214,853	(651,768)	40,781,248	0.30%	
9B	UBS Agrivest, LLC	46,442,135	805,465	1,640,945	48,888,545	0.36%	
9G	Hancock Agricultural Investment Group	16,854,512	955	-	16,855,466	0.12%	
	Total Other Investments	103,514,810	2,021,272	989,177	106,525,259		0.77%
Absolute Return Pool (3)							
9D	Mariner Investment Group, Inc.	114,441,468	(531,930)	-	113,909,537	0.83%	
9E	Cadogan Management LLC	115,447,950	(3,165,472)	-	112,282,478	0.82%	
9F	Crestline Investors, Inc.	120,675,899	264,831	-	120,940,730	0.88%	
	Total Absolute Return Investments	350,565,317	(3,432,571)	-	347,132,746		2.52%
Investments in Real Estate							
82	Real Estate Properties	1,279,167,253	4,691,576	32,507,551	1,316,366,381	9.56%	
9H	REIT Holdings	101,114,872	3,681,762	-	104,796,634	0.76%	
83/84	Mortgage-related Assets (2)	34,179	285	(2,383)	32,081	0.00%	
	Total Real Estate Investments	1,380,316,304	8,373,624	32,505,168	1,421,195,095		10.32%
	TOTALS	13,761,162,135	26,680,945	(26,372,267)	13,765,470,813	100.00%	100.00%

(1) Investment is represented by shares in (or as a percentage of) commingled equity investments which, at any given time, may be a combination of securities and cash.

(2) Mortgage-related assets are managed in-house. These assets are valued at their principal balance (cost) less an allowance for loan loss, the result of which approximates market value.

(3) Investment is represented by shares in various hedge funds.

ALASKA RETIREMENT MANAGEMENT BOARD
Supplemental Annuity Plan
Schedule of Investment Income and Changes in Invested Assets
for the Month Ended July 31, 2006

	Beginning Invested Assets	Investment Income	Contributions	Withdrawals ⁽³⁾	Transfers in (out)	Ending Invested Assets
Interim Transit Account						
Treasury Division ⁽¹⁾						
Cash and Cash Equivalents	\$ 1,660,341	\$ 14,903	\$ 10,142,650	\$ (10,177,577)	\$ -	\$ 1,640,317
Participant Options ⁽²⁾						
T. Rowe Price						
Target 2010 Fund	40,301,554	11,586	36,899	(548)	114,460	40,463,951
Target 2015 Fund	79,946,493	87,942	123,340	(15,320)	351,921	80,494,376
Target 2020 Fund	22,771,326	479,749	435,394	(144,355)	141,898	23,684,013
Target 2025 Fund	2,526,029	356,215	113,717	(82,471)	276,441	3,189,930
Alaska Balanced Fund	1,082,892,128	10,336,836	3,965,205	(11,884,436)	(1,707,570)	1,083,602,163
Long Term Balanced Fund	100,718,781	790,295	3,158,929	(575,883)	(454,779)	103,637,343
Small-Cap Stock Fund	57,313,354	(1,636,178)	351,605	(281,412)	(1,757,173)	53,990,197
Stable Value Fund	149,539,680	519,919	326,689	(3,383,831)	4,171,817	151,174,274
	<u>1,536,009,345</u>	<u>10,946,363</u>	<u>8,511,779</u>	<u>(16,368,254)</u>	<u>1,137,014</u>	<u>1,540,236,247</u>
State Street Global Advisors						
Daily Government/Corporate Bond Fund Series A	36,074,318	503,772	129,333	(240,551)	978,001	37,444,874
S&P 500 Stock Index Fund Series A	<u>247,249,646</u>	<u>1,505,677</u>	<u>987,064</u>	<u>(1,339,899)</u>	<u>(1,758,343)</u>	<u>246,644,145</u>
	283,323,964	2,009,449	1,116,397	(1,580,450)	(780,342)	284,089,018
Barclays Global Advisors						
Tactical Asset Allocation Fund	22,933,894	268,428	81,062	(340,168)	(255,021)	22,688,195
Brandes Institutional						
International Equity Fund	96,070,526	(41,700)	576,378	(483,199)	608,991	96,730,995
Capital Guardian Trust Company						
Global Balanced Fund	60,227,177	(91,787)	240,479	(587,879)	(497,751)	59,290,239
Citizens Advisers						
Citizens Core Growth Fund	22,151,834	(619,420)	139,947	(80,120)	(212,891)	21,379,350
	<u>2,020,716,741</u>	<u>12,471,333</u>	<u>10,666,041</u>	<u>(19,440,071)</u>	<u>-</u>	<u>2,024,414,044</u>
Total Externally Managed Funds						
	<u>2,022,377,082</u>	<u>12,486,236</u>	<u>\$ 20,808,691</u>	<u>\$ (29,617,648)</u>	<u>\$ -</u>	<u>\$ 2,026,054,361</u>

Notes:

(1) Represents net contributions in transit to/from the record keeper. Invested assets are under the fiduciary responsibility of the Commissioner of Revenue.

(2) Source data provided by the record keeper, Great West Life.

(3) Includes fees.

ALASKA RETIREMENT MANAGEMENT BOARD
Supplemental Annuity Plan
Schedule of Invested Assets with
Schedule of Investment Income and Changes in Invested Assets
By Month Through the Month Ended July 31, 2006
\$ (Thousands)

	July	August	September	October	November	December	January	February	March	April	May	June
<u>Invested Assets (At Fair Value)</u>												
Investments with Treasury Division ⁽¹⁾												
Cash and cash equivalents	\$ 1,640	\$	\$	\$	\$	\$	\$	\$	\$	\$	\$	\$
Investments with T. Rowe Price												
Target 2010 Fund	40,965											
Target 2015 Fund	80,859											
Target 2020 Fund	23,319											
Target 2025 Fund	2,688											
Alaska Balanced Fund	1,083,602											
Long Term Balanced Fund	103,637											
Small-Cap Stock Fund	53,990											
Stable Value Fund	151,174											
Investments with State Street Global Advisors												
Daily Government/Corporate Bond Fund Series A	37,445											
S&P 500 Stock Index Fund Series A	246,644											
Investments with Barclays Global Investors												
Tactical Asset Allocation Fund	22,688											
Investments with Brandes Investment Partners												
International Equity Fund	96,731											
Investments with Capital Guardian												
Global Balanced Fund	59,290											
Investments with Citizens Advisers												
Citizens Core Growth Fund	21,379											
Total Invested Assets	\$ 2,026,054	\$	\$ -	\$ -	\$ -	\$ -	\$ -	\$ -	\$ -	\$ -	\$ -	\$ -
<u>Change in Invested Assets:</u>												
Beginning Assets	\$ 2,022,377	\$	\$	\$	\$	\$	\$	\$	\$	\$	\$	\$
Investment Earnings	12,486											
Contributions	20,809											
Withdrawals	(29,618)											
Ending Invested Assets	\$ 2,026,054	\$	\$ -	\$ -	\$ -	\$ -	\$ -	\$ -	\$ -	\$ -	\$ -	\$ -

⁽¹⁾ Invested assets are under the fiduciary responsibility of the Commissioner of Revenue.

ALASKA RETIREMENT MANAGEMENT BOARD
Deferred Compensation Plan
Schedule of Invested Assets and Changes in Invested Assets
for the Month Ended July 31, 2007

	Beginning Invested Assets	Investment Income	Contributions	Withdrawals ⁽¹⁾	Transfers in (out)	Ending Invested Assets
Participant Options						
T. Rowe Price						
Interest Income Fund	\$ 135,707,188	\$ 500,646	\$ 454,726	\$ (1,092,932)	\$ 1,006,502	\$ 136,576,130
Small Cap Stock Fund	62,477,922	(1,735,649)	394,239	(426,760)	(407,322)	60,302,429
Total Investments with T. Rowe Price	<u>198,185,109</u>	<u>(1,235,003)</u>	<u>848,965</u>	<u>(1,519,692)</u>	<u>599,180</u>	<u>196,878,559</u>
Barclays Global Investors						
Intermediate Bond Fund	9,830,350	102,583	56,947	(57,291)	(65,321)	9,867,268
Government/Credit Bond Fund	24,498,660	323,782	138,348	(155,417)	(200,494)	24,604,879
S&P 500 Index Fund	129,548,769	816,222	724,632	(1,056,866)	(500,470)	129,532,287
Tactical Asset Allocation Fund	26,409,501	315,059	197,954	(147,739)	52,497	26,827,272
Total Investments with Barclays Global Investors	<u>190,287,280</u>	<u>1,557,645</u>	<u>1,117,881</u>	<u>(1,417,314)</u>	<u>(713,787)</u>	<u>190,831,706</u>
Capital Guardian Trust Company						
Global Balanced Fund	39,377,471	(53,004)	311,372	(325,774)	(15,895)	39,294,172
Brandes Institutional						
International Equity Fund	50,850,390	22,795	387,249	(328,456)	(40,673)	50,891,304
Citizens Advisers						
Citizens Core Growth Fund	5,255,087	(147,777)	77,394	(12,011)	171,175	5,343,867
Total All Funds	<u>\$ 483,955,337</u>	<u>\$ 144,658</u>	<u>\$ 2,742,861</u>	<u>\$ (3,603,248)</u>	<u>\$ -</u>	<u>\$ 483,239,608</u>

⁽¹⁾ Includes fees.

Source data provided by the record keeper, Great West Life.

ALASKA RETIREMENT MANAGEMENT BOARD
Deferred Compensation Plan
Schedule of Invested Assets with
Schedule of Investment Income and Changes in Invested Assets
By Month Through the Month Ended July 31, 2006
\$ (Thousands)

	<u>July</u>	<u>August</u>	<u>September</u>	<u>October</u>	<u>November</u>	<u>December</u>	<u>January</u>	<u>February</u>	<u>March</u>	<u>April</u>	<u>May</u>	<u>June</u>
<u>Invested Assets (at fair value)</u>												
Investments with T. Rowe Price												
Interest Income Fund												
Cash and cash equivalents	\$ 9,912	\$										
Synthetic Investment Contracts	126,664											
Investments with Barclays Global Investors												
Intermediate Bond Fund	9,867											
Government/Credit Bond Fund	24,605											
S&P 500 Index Fund	129,532											
Tactical Asset Allocation Fund	26,827											
Investments with Capital Guardian Trust Company												
Global Balanced Fund	39,294											
Investments with Brandes Institutional												
International Equity Fund	50,891											
Investments with Citizens Advisers												
Citizens Core Growth Fund	5,344											
Total Invested Assets	\$ 483,240	\$										
<u>Change in Invested Assets</u>												
Beginning Assets	\$ 483,955	\$										
Investment Earnings	145											
Contributions	2,743											
Withdrawals	(3,603)											
Ending Invested Assets	\$ 483,240	\$										

Source data provided by the record keeper, Great West Life.